

**NORMA: DIN 315**

MATICE KŘÍDLOVÉ
WING NUTS - ROUNDED WINGS

NORMA: DIN 439 B

MATICE ŠESTIHRANNÉ NÍZKÉ
HEXAGON THIN NUTS

NORMA: DIN 439 B

MATICE ŠESTIHRANNÉ NÍZKÉ S JEMNÝM ZÁVITEM
HEXAGON THIN NUTS - METRIC FINE PITCH THREAD

NORMA: DIN 466

MATICE RÝHOVANÉ, VYSOKÉ
KNURLED THUMB NUTS, HIGH TYPE

NORMA: DIN 467

PLOCHÉ RÁDLOVANÉ MATICE
KNURLED THUMB NUTS

NORMA: DIN 557

MATICE ČTYŘHRANNÉ
SQUARE NUTS

NORMA: DIN 562

MATICE ČTYŘHRANNÉ NÍZKÉ
SQUARE THIN NUTS, GRADE B

NORMA: DIN 582

MATICE KRUHOVÉ ZÁVĚSNÉ
LIFTING EYE NUTS

NORMA: DIN 917

MATICE UZAVŘENÉ
HEXAGON CAP NUTS

NORMA: DIN 928

MATICE K NAVAŘENÍ ČTYŘHRANNÉ
SQUARE WELD NUTS

NORMA: DIN 929

MATICE K NAVAŘENÍ ŠESTIHRANNÉ
WELD NUTS HEXAGON

NORMA: DIN 934

MATICE ŠESTIHRANNÉ i levý závit
HEXAGON NUTS

NORMA: DIN 934

MATICE ŠESTIHRANNÉ - jemný závit
HEXAGON NUTS, fine pitch

NORMA: DIN 934

MATICE ŠESTIHRANNÉ – trubkový závit
HEXAGON NUTS

NORMA: DIN 934

MATICE ŠESTIHRANNÉ – whitworth UNC, UNF, BSW, BSF
HEXAGON NUTS - UNC, UNF, BSW, BSF

NORMA: DIN 935

MATICE KORUNKOVÉ VYSOKÉ
CASTLE NUTS

NORMA: DIN 935

MATICE KORUNKOVÉ VYSOKÉ - jemný závit
CASTLE NUTS-fine thread

NORMA: DIN 937

KORUNKOVÁ NÍZKÁ MATICE i jemný závit
CASTLE THIN NUTS and fine thread

NORMA: DIN 980

POJISTNÉ ŠESTIHRANNÉ MATICE
PREVAILING TORQUE TYPE HEXAGON NUTS

NORMA: DIN 982

POJISTNÁ MATICE-vysoký tvar s polyamidovou vložkou
LOCK NUTS - high form with polyamid box

NORMA: DIN 985

POJISTNÁ MATICE
-nízký tvar s polyamidovou vložkou
LOCK NUTS - low form with polyamid box

NORMA: DIN 985

POJISTNÁ MATICE-jemný závit,
nízký tvar s polyamidovou vložkou
LOCK NUTS -fine thread, low form with polyamid insert

NORMA: DIN 986

POJISTNÁ MATICE UZAVŘENÁ
S POLYAMIDOVOU VLOŽKOU
HEXAGON CUP NUT WITH PLASTIC

NORMA: DIN 1587

KLOBOUKOVÁ MATICE
HEXAGON DOMED CAP NUTS

KÓD: 6333

TRUBKOVÁ SPOJOVACÍ MATICE
ROUND CONNECTION NUTS

NORMA: DIN 6334

ŠESTIHRANNÁ SPOJOVACÍ MATICE
HEXAGON CONNECTION NUTS

DIN: 6915

ZVĚTŠENÁ ŠESTIHRANNÁ MATICE
pro ocelové konstrukce
EXTENDED HEXAGON NUTS

NORMA: DIN 6923

ŠESTIHRANNÁ MATICE S LÍMCEM (S OZUBENÍM)
HEXAGON NUTS (WITH TEETH)

NORMA: DIN 6926

POJISTNÁ MATICE S PŘÍRUBOU
A POLYAMIDOVOU VLOŽKOU
PREVAILING TORQUE HEXAGON FLANGE NUTS
WITH POLYAMID INSERT

NORMA: DIN 7967

POJISTNÁ MATICE PLECHOVÁ
SELF-LOCKING COUNTER NUTS

**NEUVEDENÉ NORMY
A ROZMĚRY NA POPTÁNÍ!**

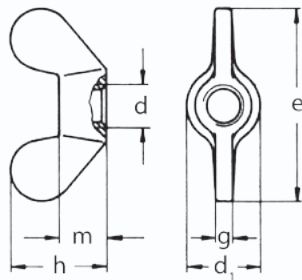


**NORMA: DIN 315****MATICE KŘÍDLOVÉ****WING NUTS - ROUNDED WINGS**

Materiál: Temperovaná litina/ocel, nerez A2, A4

Povrchová úprava: Zinek

Pevnost: 4.8



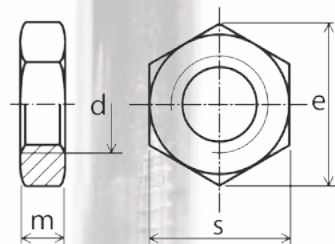
| d | d1 max | e max | g max | h max |
|------|--------|-------|-------|-------|
| M 4 | 8 | 20 | 1,9 | 10,5 |
| M 5 | 11 | 26 | 2,3 | 13 |
| M 6 | 13 | 33 | 2,3 | 17 |
| M 8 | 16 | 39 | 2,8 | 20 |
| M 10 | 20 | 51 | 4,4 | 25 |
| M 12 | 23 | 65 | 4,9 | 33,5 |
| M 14 | 28 | 72 | 6 | 36 |
| M 16 | 29 | 73 | 6,4 | 37,5 |
| M 20 | 35 | 90 | 6,9 | 46,5 |
| M 24 | 44 | 110 | 9,4 | 56,5 |

NORMA: DIN 439 B**MATICE ŠESTIHRANNÉ NÍZKÉ S JEMNÝM ZÁVITEM****HEXAGON THIN NUTS - METRIC FINE PITCH THREAD**

Materiál: Ocel, nerez A2, A4

Povrchová úprava: Zinek

Pevnost: 4.8



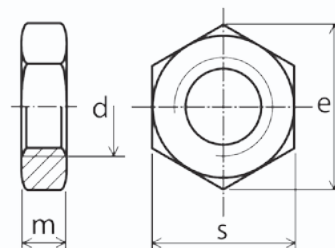
| d | e min | s | m max |
|-----------|-------|-------|-------|
| M 8*1 | 14,38 | 13 | 4 |
| M 10*1 | 18,9 | 17/16 | 5 |
| M 10*1,25 | 18,9 | 17/16 | 5 |
| M 12*1 | 21,1 | 19/18 | 6 |
| M 12*1,25 | 21,1 | 19/18 | 6 |
| M 12*1,5 | 21,1 | 19/18 | 6 |
| M 14*1,5 | 24,49 | 22/21 | 7 |
| M 16,1,5 | 26,75 | 24 | 8 |
| M 18*1,5 | 29,56 | 27 | 9 |
| M 20*1,5 | 32,95 | 30 | 10 |
| M 22*1,5 | 35,03 | 32/34 | 11 |
| M 24*2 | 39,55 | 36 | 12 |

NORMA: DIN 439 B**MATICE ŠESTIHRANNÉ NÍZKÉ****HEXAGON THIN NUTS**

Materiál: Ocel, nerez A2, A4

Povrchová úprava: Bez povrchové úpravy, zinek

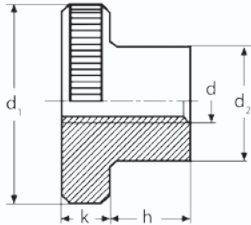
Pevnost: 4.8, 8.8



| d | e min | s | m max |
|-------|-------|-------|-------|
| M 2 | 4,32 | 4 | 1,2 |
| M 2,5 | 5,45 | 5 | 1,6 |
| M 2,6 | 5,45 | 5 | 1,6 |
| M 3 | 6,01 | 5,5 | 1,8 |
| M 3,5 | 6,58 | 6 | 2 |
| M 4 | 7,66 | 7 | 2,2 |
| M 5 | 8,79 | 8 | 2,7 |
| M 6 | 11,05 | 10 | 3,2 |
| M 7 | 11,94 | 11 | 3,5 |
| M 8 | 14,38 | 13 | 4 |
| M 10 | 18,9 | 17/16 | 5 |
| M 12 | 21,1 | 19/18 | 6 |
| M 14 | 24,49 | 22/21 | 7 |
| M 16 | 26,75 | 24 | 8 |
| M 18 | 29,56 | 27 | 9 |
| M 20 | 32,95 | 30 | 10 |
| M 22 | 35,03 | 32/34 | 11 |
| M 24 | 39,55 | 36 | 12 |
| M 27 | 45,2 | 41 | 13,5 |
| M 30 | 50,85 | 46 | 15 |
| M 33 | 55,37 | 50 | 16,5 |
| M 36 | 60,79 | 55 | 18 |
| M 39 | 66,44 | 60 | 19,5 |
| M 42 | 71,3 | 65 | 21 |
| M 45 | 76,95 | 70 | 22,5 |
| M 48 | 82,6 | 75 | 24 |

**NORMA: DIN 466**MATICE RÝHOVANÉ, VYSOKÉ
KNURLED THUMB NUTS, HIGH TYPE

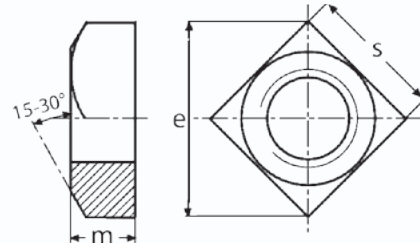
Materiál: Ocel, nerez A1
Povrchová úprava: Zinek
Pevnost: 4.8



| d | d2 | d1 | h | k |
|-----|----|----|------|-----|
| M3 | 6 | 12 | 7,5 | 2,5 |
| M4 | 8 | 16 | 9,5 | 3,5 |
| M5 | 10 | 20 | 11,5 | 4 |
| M6 | 12 | 24 | 15 | 5 |
| M8 | 16 | 30 | 18 | 6 |
| M10 | 20 | 36 | 23 | 8 |

NORMA: DIN 557MATICE ČTYŘHRANNÉ
SQUARE NUTS

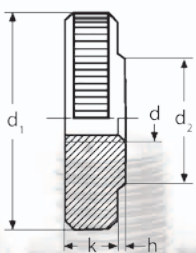
Materiál: Ocel, nerez A2, A4
Povrchová úprava: Zinek
Pevnost: 4.8



| d1 | e | s | m |
|-----|------|----|-----|
| M5 | 11,3 | 8 | 4 |
| M6 | 14,1 | 10 | 5 |
| M8 | 18,4 | 13 | 6,5 |
| M10 | 24 | 17 | 8 |
| M12 | 26,9 | 19 | 10 |
| M16 | 33,9 | 24 | 13 |
| M20 | 42,4 | 30 | 16 |

NORMA: DIN 467PLOCHÉ RÁDLOVANÉ MATICE
KNURLED THUMB NUTS

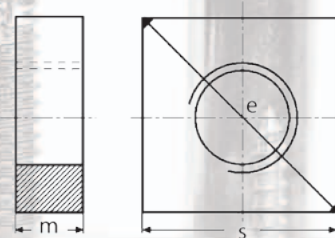
Materiál: Ocel, nerez A2, A4
Povrchová úprava: Bez povrchové úpravy, zinek
Pevnost: 4.8



| d | d2 | d1 | h | k |
|-----|----|----|----|-----|
| M3 | 6 | 12 | 3 | 2,5 |
| M4 | 8 | 16 | 4 | 3,5 |
| M5 | 10 | 20 | 5 | 4 |
| M6 | 12 | 24 | 6 | 5 |
| M8 | 16 | 30 | 8 | 6 |
| M10 | 20 | 36 | 10 | 8 |

NORMA: DIN 562MATICE ČTYŘHRANNÉ NÍZKÉ
SQUARE THIN NUTS, GRADE B

Materiál: Ocel, nerez A2, A4
Povrchová úprava: Zinek
Pevnost: 4.8



| d1 | e | s | m |
|-----|------|-----|-----|
| M2 | 5 | 4 | 1,2 |
| M3 | 7 | 5,5 | 1,8 |
| M4 | 8,9 | 7 | 2,2 |
| M5 | 10,2 | 8 | 2,7 |
| M6 | 12,7 | 10 | 3,2 |
| M8 | 16,5 | 13 | 4 |
| M10 | 21,5 | 17 | 5 |

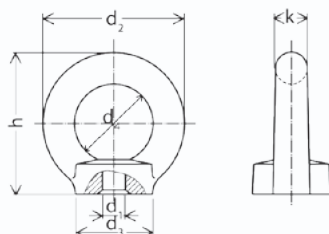


**NORMA: DIN 582****MATICE KRUHOVÉ ZÁVĚSNÉ
LIFTING EYE NUTS**

Materiál: Ocel, nerez A2, A4

Povrchová úprava: Bez povrchové úpravy, zinek

Pevnost: 4.8



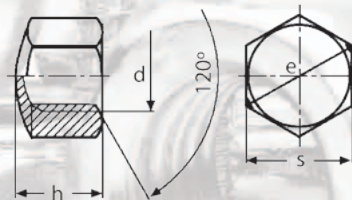
| d1 | h | d2 | d3 | d4 | k | nosnost ve vzpřímené poloze / kg | nosnost v diagonální poloze 45° / kg |
|------|-----|-----|-----|-----|----|--|--|
| M 8 | 36 | 36 | 20 | 20 | 8 | 140 | 100 |
| M 10 | 45 | 45 | 25 | 25 | 10 | 230 | 170 |
| M 12 | 53 | 54 | 30 | 30 | 12 | 340 | 240 |
| M 14 | 62 | 63 | 35 | 35 | 14 | 340 | 240 |
| M 16 | 62 | 63 | 35 | 35 | 14 | 700 | 500 |
| M 20 | 71 | 72 | 40 | 40 | 16 | 1200 | 860 |
| M 24 | 90 | 90 | 50 | 50 | 20 | 1800 | 1290 |
| M 27 | 109 | 108 | 65 | 60 | 24 | 1800 | 1290 |
| M 30 | 109 | 108 | 65 | 60 | 24 | 3200 | 2300 |
| M 36 | 158 | 126 | 75 | 70 | 28 | 4600 | 3300 |
| M 42 | 147 | 144 | 85 | 80 | 32 | 6300 | 4500 |
| M 48 | 168 | 166 | 100 | 90 | 38 | 8600 | 6100 |
| M 56 | 187 | 184 | 110 | 100 | 42 | 11500 | 8200 |
| M 64 | 208 | 206 | 120 | 110 | 48 | 16000 | 11000 |

NORMA: DIN 917**MATICE UZAVŘENÉ
HEXAGON CAP NUTS**

Materiál: Ocel, nerez A2, A4

Povrchová úprava: Zinek, leštěno pochromováno

Pevnost: 5.8



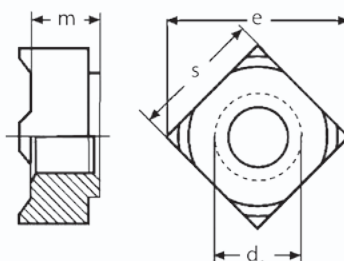
| d | e min | h | s |
|-----|-------|-----|-----|
| M 3 | 6,08 | 5 | 5,5 |
| M 4 | 7,66 | 5,5 | 7 |
| M 5 | 8,79 | 7 | 8 |
| M 6 | 11,05 | 9 | 10 |
| M 8 | 14,38 | 12 | 13 |

| d | e min | h | s |
|------|-------|----|-------|
| M 10 | 19,8 | 14 | 17/16 |
| M 12 | 21,1 | 16 | 19/18 |
| M 16 | 26,75 | 20 | 24 |
| M 20 | 32,95 | 25 | 30 |
| M 24 | 39,55 | 30 | 36 |

NORMA: DIN 928**MATICE K NAVAŘENÍ ČTYŘHRANNÉ
SQUARE WELD NUTS**

Materiál: Ocel (C 0,25%), nerez A2

Povrchová úprava: Bez povrchové úpravy

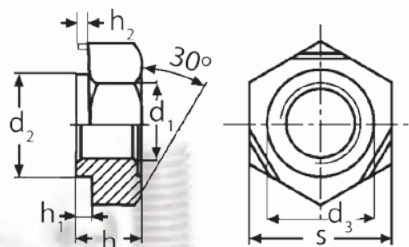


| d1 | e min | m | s | t min | t max |
|------|-------|-----|-------|-------|-------|
| M 3 | 6,08 | 5 | 5,5 | 3 | 3,4 |
| M 4 | 7,66 | 5,5 | 7 | 4,16 | 4,64 |
| M 5 | 8,79 | 7 | 8 | 4,96 | 5,44 |
| M 6 | 11,05 | 9 | 10 | 6,71 | 7,29 |
| M 8 | 14,38 | 12 | 13 | 9,21 | 9,79 |
| M 10 | 19,8 | 14 | 17/16 | 10,65 | 11,35 |
| M 12 | 21,1 | 16 | 19/18 | 13,15 | 13,85 |
| M 16 | 26,75 | 20 | 24 | 16,65 | 17,35 |
| M 20 | 32,95 | 25 | 30 | 20,58 | 21,45 |
| M 24 | 39,55 | 30 | 36 | 23,58 | 24,42 |

NORMA: DIN 929**MATICE K NAVAŘENÍ ŠESTIHRANNÉ
WELD NUTS HEXAGON**

Materiál: Ocel (C 0,25%), nerez A2

Povrchová úprava: Bez povrchové úpravy



| d1 | d2 | d3 | h1 | h2 | h | s |
|------|------|------|------|------|-----|-----|
| M 3 | 4,5 | 4,5 | 0,55 | 0,25 | 3 | 7,5 |
| M 4 | 6 | 6 | 0,65 | 0,35 | 3,5 | 9 |
| M 5 | 7 | 7 | 0,7 | 0,4 | 4 | 10 |
| M 6 | 8 | 8 | 0,75 | 0,4 | 5 | 11 |
| M 8 | 10,5 | 10,5 | 0,9 | 0,5 | 6,5 | 14 |
| M 10 | 12,5 | 12,5 | 1,15 | 0,65 | 8 | 17 |
| M 12 | 14,8 | 14,8 | 1,4 | 0,8 | 10 | 19 |
| M 14 | 16,8 | 16,8 | 1,8 | 1 | 11 | 22 |
| M 16 | 18,8 | 18,8 | 1,8 | 1 | 13 | 24 |



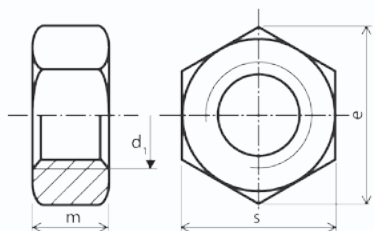
NORMA: DIN 934

MATICE ŠESTIHRANNÉ i levý závit
HEXAGON NUTS

Materiál: Ocel, nerez - A2, A4

Povrchová úprava: Bez povrchové úpravy, zinek

Pevnost: 8.8, 10.9, 12.9



| d ₁ | M1 | M 1,2 | M 1,4 | M 1,6 | M 1,7 | M 1,8 | M2 | M 2,2 |
|----------------|------|-------|-------|-------|-------|-------|------|-------|
| e min | 2,71 | 3,28 | 3,28 | 3,41 | 3,82 | 4 | 4,32 | 5,2 |
| s | 2,5 | 3 | 3 | 3,2 | 3,5 | 3,5 | 4 | 4,5 |
| m max | 0,8 | 1 | 1,2 | 1,3 | 1,4 | 1,4 | 1,6 | 1,8 |

| d ₁ | M 2,3 | M2,5 | M 2,6 | M3 | M3,5 | M4 | M5 | M6 |
|----------------|-------|------|-------|------|------|------|------|-------|
| e min | 4,88 | 5,45 | 5,45 | 6,01 | 6,58 | 7,66 | 8,79 | 11,05 |
| s | 4,5 | 5 | 5 | 5,5 | 6 | 7 | 8 | 10 |
| m max | 1,8 | 2 | 2 | 2,4 | 2,8 | 3,2 | 4 | 5 |

| d ₁ | M7 | M8 | M10 | M12 | M14 | M16 | M18 | M20 |
|----------------|-------|-------|-------|-------|-------|-------|-------|-------|
| e min | 12,12 | 14,38 | 18,9 | 21,1 | 24,49 | 26,75 | 29,56 | 32,95 |
| s | 11 | 13 | 17/16 | 19/18 | 22/21 | 24 | 27 | 30 |
| m max | 5,5 | 6,5 | 8 | 10 | 11 | 13 | 15 | 16 |

| d ₁ | M22 | M24 | M27 | M30 | M33 | M36 | M39 | M42 |
|----------------|-------|-------|------|-------|-------|-------|-------|------|
| e min | 35,03 | 39,55 | 45,2 | 50,85 | 55,37 | 60,79 | 66,44 | 73,3 |
| s | 32/34 | 36 | 41 | 46 | 50 | 55 | 60 | 65 |
| m max | 18 | 19 | 22 | 24 | 26 | 29 | 31 | 34 |

| d ₁ | M45 | M48 | M52 | M56 | M64 | M72 | M76 |
|----------------|-------|------|-------|------|--------|--------|--------|
| e min | 76,95 | 82,6 | 88,25 | 93,6 | 104,86 | 116,16 | 121,81 |
| s | 70 | 75 | 80 | 85 | 95 | 105 | 110 |
| m max | 36 | 38 | 42 | 45 | 51 | 58 | 61 |

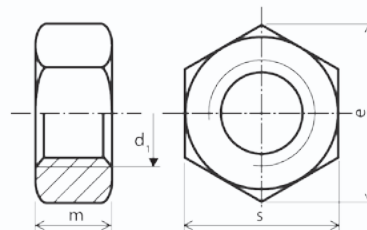
NORMA: DIN 934

MATICE ŠESTIHRANNÉ - jemný závit
HEXAGON NUTS, fine pitch

Materiál: Ocel, nerez - A2, A4

Povrchová úprava: Bez povrchové úpravy, zinek

Pevnost: 8.8, 10.9, 12.9



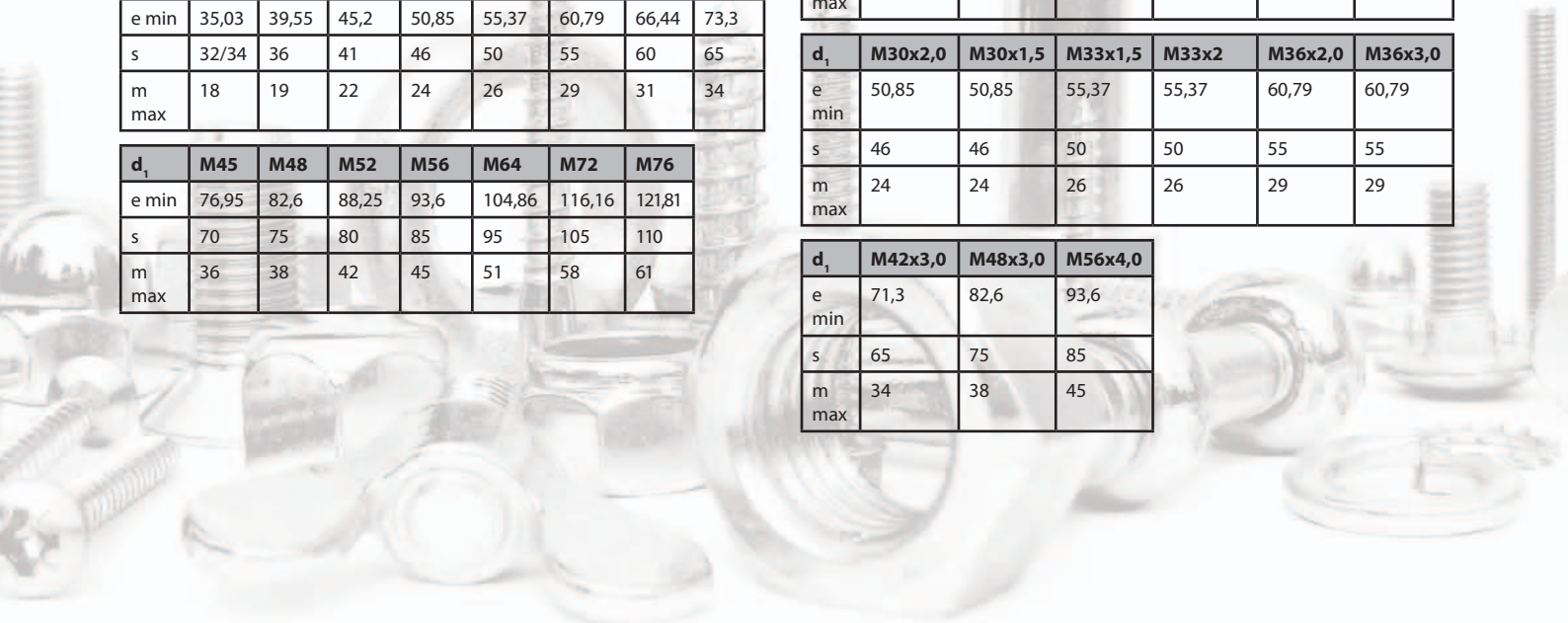
| d ₁ | M6x0,75 | M8x1,0 | M10x1,0 | M10x1,25 | M12x1,0 | M12x1,25 |
|----------------|---------|--------|---------|----------|---------|----------|
| e min | 11,05 | 14,38 | 18,9 | 18,9 | 21,1 | 21,1 |
| s | 10 | 13 | 17/16 | 17/16 | 19/18 | 19/18 |
| m max | 5 | 6,5 | 8 | 8 | 10 | 10 |

| d ₁ | M12x1,5 | M14x1,5 | M16x1,0 | M16x1,5 | M18x1,0 | M18x1,5 |
|----------------|---------|---------|---------|---------|---------|---------|
| e min | 21,1 | 24,49 | 26,75 | 26,75 | 29,56 | 29,56 |
| s | 19/18 | 22/21 | 24 | 24 | 27 | 27 |
| m max | 10 | 11 | 13 | 13 | 15 | 15 |

| d ₁ | M20x1,5 | M20x2,0 | M22x1,5 | M22x2,0 | M24x1,5 | M24x2,0 |
|----------------|---------|---------|---------|---------|---------|---------|
| e min | 32,95 | 32,95 | 35,03 | 35,03 | 39,55 | 39,55 |
| s | 30 | 30 | 32/34 | 32/34 | 36 | 36 |
| m max | 16 | 16 | 18 | 18 | 19 | 19 |

| d ₁ | M30x2,0 | M30x1,5 | M33x1,5 | M33x2 | M36x2,0 | M36x3,0 |
|----------------|---------|---------|---------|-------|---------|---------|
| e min | 50,85 | 50,85 | 55,37 | 55,37 | 60,79 | 60,79 |
| s | 46 | 46 | 50 | 50 | 55 | 55 |
| m max | 24 | 24 | 26 | 26 | 29 | 29 |

| d ₁ | M42x3,0 | M48x3,0 | M56x4,0 |
|----------------|---------|---------|---------|
| e min | 71,3 | 82,6 | 93,6 |
| s | 65 | 75 | 85 |
| m max | 34 | 38 | 45 |



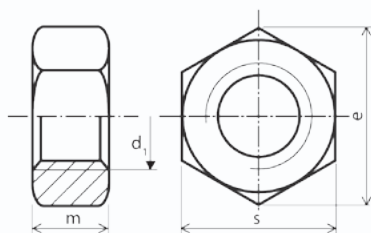
**NORMA: DIN 934**

MATICE ŠESTIHRANNÉ – trubkový závit
HEXAGON NUTS

Materiál: Ocel, nerez - A2, A4

Povrchová úprava: Bez povrchové úpravy, zinek

Pevnost: 8.8, 10.9, 12.9



| d1 | s | m |
|-------|----|----|
| G 1/8 | 17 | 10 |
| G 1/4 | 22 | 13 |
| G 3/8 | 27 | 16 |
| G 1/2 | 32 | 19 |
| G 5/8 | 36 | 23 |
| G 3/4 | 41 | 26 |
| G 7/8 | 46 | 29 |
| G 1 | 50 | 32 |

NORMA: DIN 934

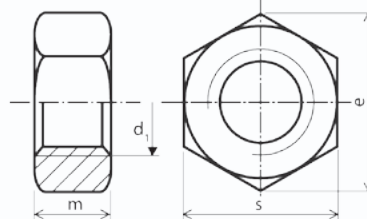
MATICE ŠESTIHRANNÉ – whitworth UNC, UNF,
BSW, BSF

HEXAGON NUTS - UNC, UNF, BSW, BSF

Materiál: Ocel, nerez - A2, A4

Povrchová úprava: Bez povrchové úpravy, zinek

Pevnost: 8.8, 10.9, 12.9



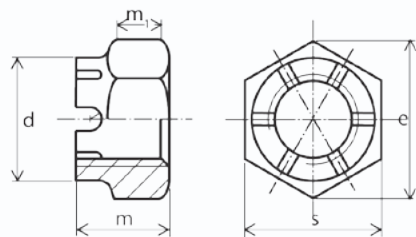
| d1 | s | m |
|-------|----|-----|
| W 1/8 | 6 | 2,4 |
| W3/16 | 9 | 4 |
| W1/4 | 11 | 5,5 |
| W5/16 | 14 | 6,5 |
| W3/8 | 17 | 8 |
| W1/2 | 22 | 10 |
| W5/8 | 27 | 13 |
| W3/4 | 32 | 16 |
| W1 | 41 | 20 |
| W11/4 | 50 | 25 |
| W11/2 | 60 | 30 |
| W2 | 80 | 40 |

**NORMA: DIN 935****MATICE KORUNKOVÉ VYSOKÉ
CASTLE NUTS**

Materiál: Ocel, nerez A2, A4

Povrchová úprava: Bez povrchové úpravy, zinek

Pevnost: 4.6, 8.8



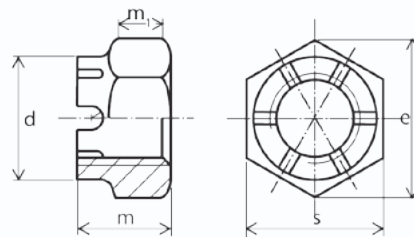
| d | e min | m max | m1 max | s |
|------|-------|-------|--------|-------|
| M 4 | 7,66 | 5 | 3,2 | 7 |
| M 5 | 5 | 13 | 4 | 8 |
| M 6 | 11,05 | 7,5 | 5 | 10 |
| M 8 | 14,38 | 9,5 | 6,5 | 13 |
| M 10 | 18,9 | 12 | 8 | 17/16 |
| M 12 | 21,1 | 15 | 10 | 19/18 |
| M 14 | 24,49 | 16 | 11 | 22/21 |
| M 16 | 26,75 | 19 | 13 | 24 |
| M 18 | 29,56 | 21 | 15 | 27 |
| M 20 | 32,95 | 22 | 16 | 30 |
| M 22 | 35,03 | 26 | 18 | 32/34 |
| M 24 | 39,55 | 27 | 19 | 36 |
| M 27 | 45,2 | 30 | 22 | 41 |
| M 30 | 50,85 | 33 | 24 | 46 |
| M 33 | 55,37 | 35 | 26 | 50 |
| M 36 | 60,79 | 38 | 29 | 55 |
| M 39 | 66,44 | 40 | 31 | 60 |
| M 42 | 71,3 | 46 | 34 | 65 |
| M 45 | 76,95 | 48 | 36 | 70 |
| M 48 | 82,6 | 50 | 38 | 75 |

NORMA: DIN 935**MATICE KORUNKOVÉ VYSOKÉ - jemný závit
CASTLE NUTS-fine thread**

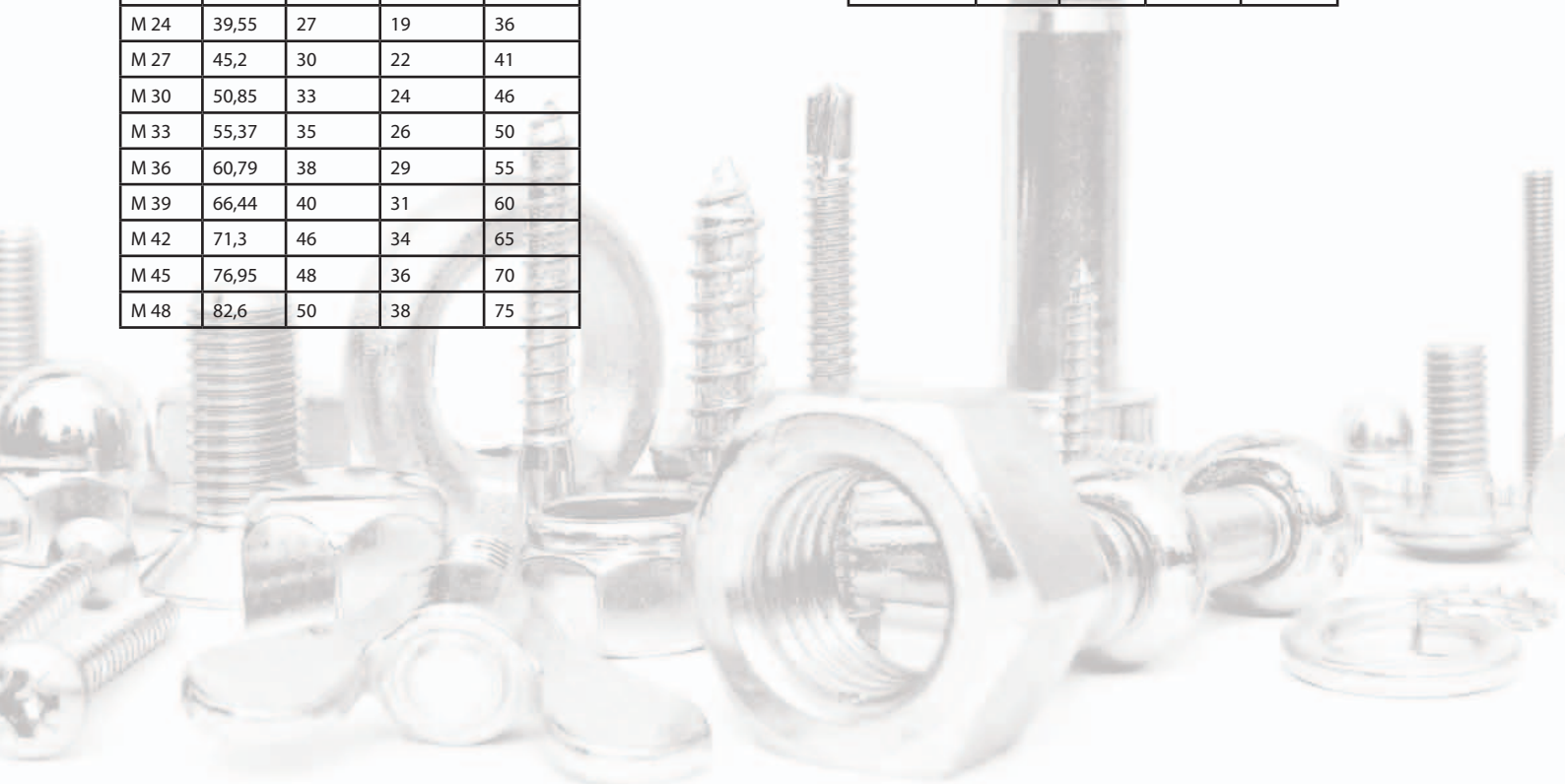
Materiál: Ocel, nerez A2

Povrchová úprava: Bez povrchové úpravy, zinek

Pevnost: 4.6, 8.8



| d | e min | m max | m1 max | s |
|-----------|-------|-------|--------|-------|
| M 8*1 | 14,38 | 9,5 | 6,5 | 13 |
| M 10*1,25 | 18,9 | 12 | 8 | 16/17 |
| M 12*1,25 | 21,1 | 15 | 10 | 19/18 |
| M 14*1,5 | 24,49 | 16 | 11 | 22/21 |
| M 16*1,5 | 26,75 | 19 | 13 | 24 |
| M 18*1,5 | 29,56 | 21 | 15 | 27 |
| M 20*1,5 | 32,95 | 22 | 16 | 30 |
| M 22*1,5 | 35,03 | 26 | 18 | 32/34 |
| M 24*2 | 39,55 | 27 | 19 | 36 |
| M 30*2 | 50,85 | 33 | 24 | 46 |
| M 36*3 | 60,79 | 38 | 29 | 55 |



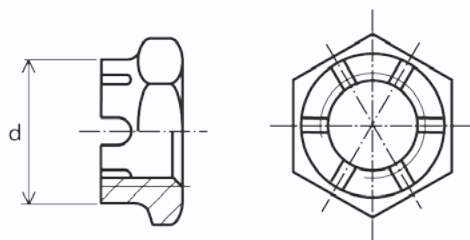
**NORMA: DIN 937**

KORUNKOVÁ NÍZKÁ MATICE i jemný závit
CASTLE THIN NUTS and fine thread

Materiál: Ocel

Povrchová úprava: Bez povrchové úpravy, zinek

Pevnost: 8.8



| d |
|-----------|
| M 6 |
| M 8 |
| M 10 |
| M 12 |
| M 12*1,25 |
| M 12*1,5 |
| M 14 |
| M 14*1,5 |
| M 16 |
| M 16*1,5 |
| M 18 |
| M 18*1,5 |
| M 20 |
| M 20*1,5 |
| M 22*1,5 |
| M 24 |
| M 24*1,5 |
| M 24*2 |
| M 27 |
| M 27*1,5 |
| M 30 |
| M 30*1,5 |
| M 30*2 |
| M 33*2 |
| M 34 |
| M 36*1,5 |
| M 36*3 |
| M 42*1,5 |

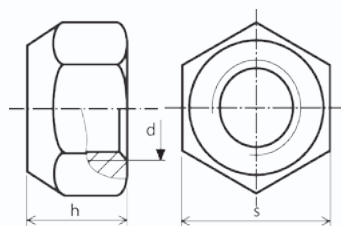
NORMA: DIN 980

POJISTNÉ ŠESTIRANNÉ MATICE
PREVAILING TORQUE TYPE HEXAGON NUTS

Materiál: Ocel, nerez A2, A4

Povrchová úprava: Bez povrchové úpravy, zinek

Pevnost: 8.8, 10.9



| d | s | h (max) |
|----------|----|---------|
| M 4 | 6 | 4,2 |
| M 5 | 8 | 5,1 |
| M 6 | 10 | 6 |
| M 8 | 12 | 8 |
| M 10 | 17 | 10 |
| M 12 | 19 | 12 |
| M 12*1,5 | 19 | 12 |
| M 14 | 22 | 14 |
| M 14*1,5 | 22 | 14 |
| M 16 | 24 | 16 |
| M 16*1,5 | 24 | 16 |
| M 18 | 26 | 18 |
| M 20 | 28 | 20 |
| M 20*1,5 | 28 | 20 |
| M 22*1,5 | 30 | 22 |

**NORMA: DIN 982**

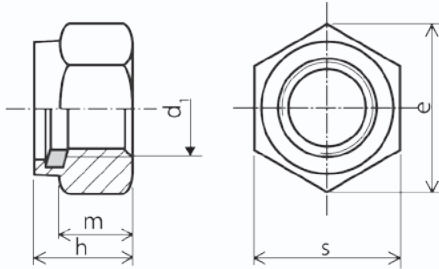
POJISTNÁ MATICE-vysoký tvar s polyamidovou vložkou

LOCK NUTS - high form with polyamid box

Materiál: Ocel, nerez A2, A4

Povrchová úprava: Zinek

Pevnost: 8.8



| d1 | h | e min | s | m |
|------|------|-------|-------|-------|
| M 5 | 6,3 | 8,79 | 8 | 4,4 |
| M 6 | 8 | 11,05 | 10 | 4,9 |
| M 8 | 9,5 | 14,38 | 13 | 6,44 |
| M 10 | 11,5 | 18,9 | 17/16 | 8,04 |
| M 12 | 14 | 21,1 | 19/18 | 10,37 |
| M 14 | 16 | 24,49 | 22/21 | 12,1 |
| M 16 | 18 | 26,75 | 24 | 14,1 |
| M 18 | 20 | 29,56 | 27 | 15,1 |
| M 20 | 22 | 32,95 | 30 | 16,9 |
| M 22 | 25 | 35,03 | 32/34 | 18,1 |
| M 24 | 28 | 39,55 | 36 | 20,2 |

NORMA: DIN 985

POJISTNÁ MATICE

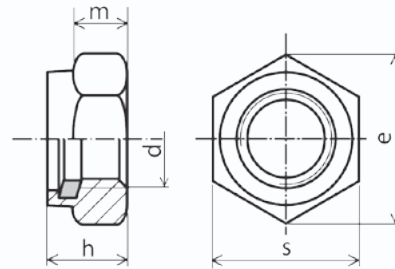
-nízký tvar s polyamidovou vložkou

LOCK NUTS - low form with polyamid box

Materiál: Ocel, nerez A2, A4

Povrchová úprava: Zinek

Pevnost: 8.8, 10.9



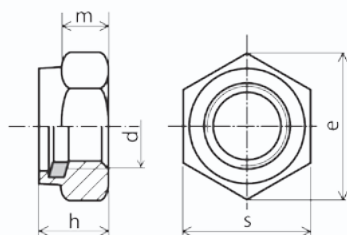
| d | e min | h max | m | s |
|-------|-------|-------|------|-------|
| M 2 | 4,91 | 2,5 | 1,6 | 4,5 |
| M 2,5 | 5,51 | 3,8 | 2 | 5 |
| M 2,6 | 5,51 | 3,8 | 2 | 5 |
| M 3 | 6,01 | 4 | 2,4 | 5,5 |
| M 3,5 | 6,64 | 4,5 | 2,6 | 5 |
| M 4 | 7,66 | 5 | 2,9 | 7 |
| M 5 | 8,79 | 5 | 3,2 | 8 |
| M 6 | 11,05 | 6 | 4 | 10 |
| M 7 | 12,12 | 7,5 | 4,7 | 11 |
| M 8 | 14,38 | 8 | 5,5 | 13 |
| M 10 | 18,9 | 10 | 6,5 | 17/16 |
| M 12 | 21,1 | 12 | 8 | 19/18 |
| M 14 | 24,49 | 14 | 9,5 | 22/21 |
| M 16 | 26,75 | 16 | 10,5 | 24 |
| M 18 | 29,56 | 18,5 | 13 | 27 |
| M 20 | 32,95 | 20 | 14 | 30 |
| M 22 | 35,03 | 22 | 15 | 32/34 |
| M 24 | 39,55 | 24 | 15 | 36 |
| M 27 | 45,2 | 27 | 17 | 41 |
| M 30 | 50,85 | 30 | 19 | 46 |
| M 33 | 55,37 | 33 | 22 | 50 |
| M 36 | 60,79 | 36 | 25 | 55 |
| M 39 | 66,44 | 39 | 27 | 60 |
| M 42 | 72,09 | 42 | 29 | 65 |
| M 45 | 76,95 | 45 | 32 | 70 |
| M 48 | 82,6 | 48 | 36 | 75 |



**NORMA: DIN 985**

POJISTNÁ MATICE-jemný závit,
nizký tvar s polyamidovou vložkou
LOCK NUTS -fine thread, low form with polyamid
insert

Materiál: Ocel, nerez A2, A4
Povrchová úprava: Zinek
Pevnost: 8,8,10,9

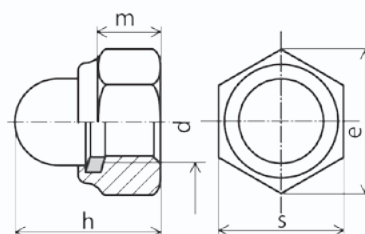


| d | e min | h max | m | s |
|-----------|-------|-------|------|-------|
| M 8*1 | 14,38 | 8 | 5,5 | 13 |
| M 10*1 | 18,9 | 10 | 6,5 | 17/16 |
| M 10*1,25 | 18,9 | 10 | 6,5 | 17/16 |
| M 12*1 | 21,1 | 12 | 8 | 19/18 |
| M 12*1,25 | 21,1 | 12 | 8 | 19/18 |
| M 12*1,5 | 21,1 | 12 | 8 | 19/18 |
| M 14*1,5 | 24,49 | 14 | 9,5 | 22/21 |
| M 16*1,5 | 26,75 | 16 | 10,5 | 24 |
| M 18*1,5 | 29,56 | 18,5 | 13 | 27 |
| M 20*1,5 | 32,95 | 20 | 14 | 30 |
| M 22*1,5 | 35,03 | 22 | 15 | 32/34 |
| M 24*2 | 39,55 | 24 | 15 | 36 |

NORMA: DIN 986

POJISTNÁ MATICE UZAVŘENÁ
S POLYAMIDOVOU VLOŽKOU
HEXAGON CUP NUT WITH PLASTIC

Materiál: Ocel, nerez A2
Povrchová úprava: Zinek

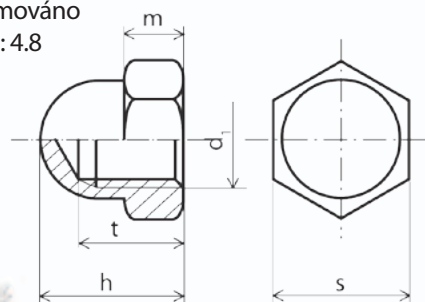


| d | e min | s | m | h |
|-----|-------|----|-------|------|
| M4 | 7,66 | 7 | 2,9 | 9,6 |
| M5 | 8,79 | 8 | 4,4 | 10,5 |
| M6 | 11,05 | 10 | 4,9 | 12 |
| M8 | 14,38 | 13 | 6,44 | 14 |
| M10 | 18,9 | 17 | 8,04 | 18,1 |
| M12 | 21,1 | 19 | 10,37 | 22,5 |
| M16 | 26,75 | 24 | 14,1 | 27,5 |

NORMA: DIN 1587

KLOBOUKOVÁ MATICE
HEXAGON DOMED CAP NUTS

Materiál: Ocel, nerez A2, A4
Povrchová úprava: Bez povrchové úpravy, zinek, leštěno
pochromováno
Pevnost: 4.8



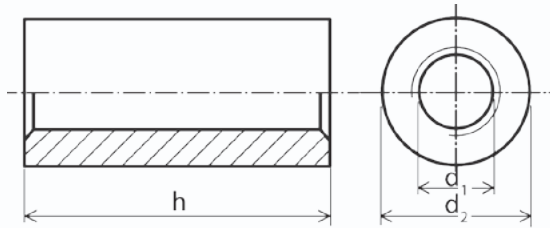
| d1 | m (max) | s | h | dk (max) | t |
|------|---------|-----|-----|----------|-----|
| M 3 | 2,5 | 5,5 | 6,5 | 5 | 4,5 |
| M 4 | 3,2 | 7 | 8 | 6,5 | 5,5 |
| M 5 | 4 | 8 | 10 | 7,5 | 7,5 |
| M 6 | 5 | 10 | 12 | 9,5 | 8 |
| M 8 | 6,5 | 13 | 15 | 12,5 | 11 |
| M 10 | 8 | 17 | 18 | 16 | 13 |
| M 12 | 10 | 19 | 22 | 18 | 16 |
| M 14 | 11 | 22 | 25 | 21 | 18 |
| M 16 | 13 | 24 | 28 | 23 | 21 |
| M 18 | 15 | 27 | 32 | 26 | 25 |
| M 20 | 16 | 30 | 34 | 28 | 26 |
| M 22 | 18 | 32 | 39 | 31 | 29 |
| M 24 | 19 | 36 | 42 | 34 | 31 |

**KÓD: 6333****TRUBKOVÁ SPOJOVACÍ MATICE**
ROUND CONNECTION NUTS

Materiál: Ocel, nerez - A2, A4,

Povrchová úprava: Bez povrchové úpravy, zinek

Pevnost: 4.8



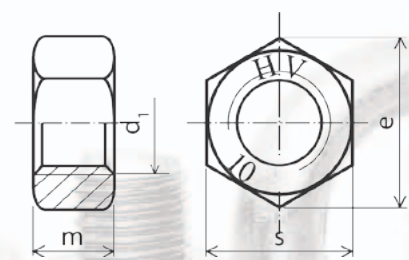
| d1 | h |
|-----|----|
| M 5 | 20 |
| M6 | 20 |
| M8 | 30 |
| M10 | 30 |
| M12 | 30 |
| M16 | 30 |

DIN: 6915**ZVĚTŠENÁ ŠESTIHRANNÁ MATICE**
pro ocelové konstrukce
EXTENDED HEXAGON NUTS

Materiál: Ocel

Povrchová úprava: Bez povrchové úpravy, zinek, žárový zinek

Pevnost: 10.9



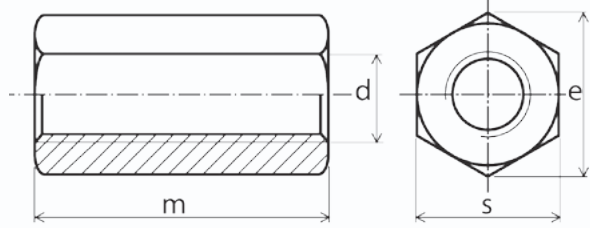
| d1 | e min | s | m |
|------|-------|----|----|
| M 12 | 23,91 | 22 | 10 |
| M 16 | 29,56 | 27 | 13 |
| M 20 | 35,03 | 32 | 16 |
| M 22 | 39,55 | 36 | 18 |
| M 24 | 45,2 | 41 | 20 |
| M 27 | 50,85 | 46 | 22 |
| M 30 | 55,37 | 50 | 24 |

NORMA: DIN 6334**ŠESTIHRANNÁ SPOJOVACÍ MATICE**
HEXAGON CONNECTION NUTS

Materiál: Ocel, nerez A2, A4

Povrchová úprava: Zinek

Pevnost: 4.8

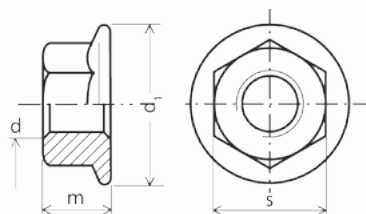


| d | m | e min | s |
|------|-----|-------|----|
| M 5 | 15 | 8,79 | 8 |
| M 6 | 18 | 11,05 | 10 |
| M 8 | 24 | 14,38 | 13 |
| M 8 | 30 | 14,38 | 13 |
| M 10 | 25 | 18,9 | 17 |
| M 10 | 30 | 18,9 | 17 |
| M 12 | 30 | 21,1 | 19 |
| M 16 | 48 | 26,75 | 24 |
| M 20 | 60 | 32,95 | 30 |
| M 24 | 72 | 39,55 | 36 |
| M 30 | 90 | 50,85 | 46 |
| M 36 | 108 | 60,79 | 55 |
| M 42 | 126 | 73,3 | 65 |
| M 48 | 144 | 82,6 | 75 |



**NORMA: DIN 6923****ŠESTIHRANNÁ MATICE S LÍMCEM (S OZUBENÍM)
HEXAGON NUTS (WITH TEETH)**

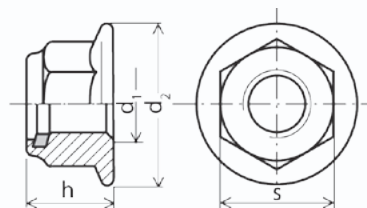
Materiál: Ocel, nerez A2
Povrchová úprava: Zinek
Pevnost: 8.8



| d | d1 max | s | m max |
|------|--------|----|-------|
| M 5 | 11,8 | 8 | 5 |
| M 6 | 14,2 | 10 | 6 |
| M 8 | 17,9 | 13 | 8 |
| M 10 | 21,8 | 15 | 10 |
| M 12 | 26 | 18 | 12 |
| M 14 | 29,9 | 21 | 14 |
| M 16 | 34,5 | 24 | 16 |
| M 20 | 42,8 | 30 | 20 |

NORMA: DIN 6926**POJISTNÁ MATICE S PŘÍRUBOU
A POLYAMIDOVOU VLOŽKOU
PREVAILING TORQUE HEXAGON FLANGE NUTS
WITH POLYAMID INSERT**

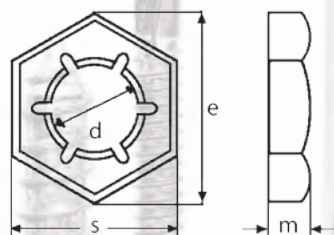
Materiál: Ocel
Povrchová úprava: Zinek



| d1 | d2 max | h max | s |
|-----|--------|-------|----|
| M5 | 11,8 | 7,1 | 8 |
| M6 | 14,2 | 9,1 | 10 |
| M8 | 17,9 | 11,1 | 13 |
| M10 | 21,8 | 13,5 | 15 |
| M12 | 26 | 16,1 | 18 |
| M16 | 34,5 | 20,3 | 24 |
| M20 | 42,8 | 24,8 | 30 |

NORMA: DIN 7967**POJISTNÁ MATICE PLECHOVÁ
SELF-LOCKING COUNTER NUTS**

Materiál: Pružinová ocel
Povrchová úprava: Zinek
Pevnost: 4.8



| d | e | s | m |
|------|------|----|-----|
| M 4 | 8,1 | 7 | 2,5 |
| M 5 | 9,2 | 8 | 2,5 |
| M 6 | 11,5 | 10 | 3 |
| M 8 | 15 | 13 | 3,5 |
| M 10 | 19,6 | 17 | 4 |
| M 12 | 21,9 | 19 | 4,5 |
| M 16 | 27,7 | 24 | 5 |
| M 20 | 34,6 | 30 | 6 |
| M 22 | 36,9 | 32 | 6 |
| M 24 | 41,6 | 36 | 7 |
| M 30 | 53,1 | 46 | 8 |